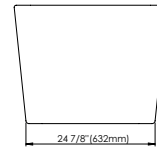
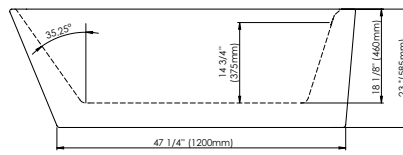
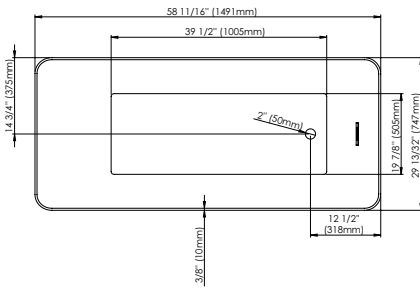
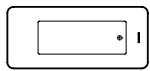


# LAUZANNE F1 3260

58 11/16" x 29 13/32" x 23" [64gallons]

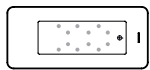


24-48 hrs



Bathtub only

LAU3060F1



Mass-Air

LAU3060F1M

Included: 12 injectors, 750W (1 1/2h.p.) Optima blower, with 300W heating element, 72" blower hose extension, and remote control.



Rouge-Air

LAU3060F1A

Included: 12 micro-jets, 750W (1 1/2h.p.) Optima blower, with 300W heating element, 72" blower hose extension, and remote control.

## GENERAL OPTIONS

Overflow and waste included: Chrome

Above-the-floor rough (AFR)

Acrylic Colour: White

Adjustable feet

Standard

Bathtub drain adapter (picture below)

Gel black neck pillow

White or brushed nickel overflow and drain kit

## MASS-AIR / ROUGE-AIR OPTIONS

Mass-Air Jet finish: White/Chrome

Standard

Others: Chrome/Chrome

96" blower hose extension

A blower hose extension is required when the blower is located more than 4' from the bathtub.

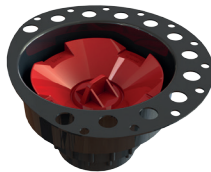
\* Possibility to install FEN990240 and TAR990340 faucets.

## BATHTUB DRAIN ADAPTER

D-111 (123 Connect) is a floor drain adapter designed to facilitate the installation of freestanding bathtubs (must be installed before tiles are laid).

Designed to be installed in a 8" to 10" joist space.

Can be installed with a waterproofing membrane



## LINEAR OVERFLOW



White



Brushed nickel



Chrome



Intertek

CONFORMITY ATTESTATION

Bathtub Standards

CAN / CSA.B45.5

Hydromassage Standard

CAN / CSA.B45.10 / CSA.C22.2 / UL-1795



ECORESPONSABLE Certification

First manufacturer of bathroom products in

North America to be certified ecoresponsible



Produits Neptune  
Rouge

6635, Picard street, Saint-Hyacinthe (Québec) J2S 1H3

Phone: (450) 773-7058 - Fax: (450) 773-5063

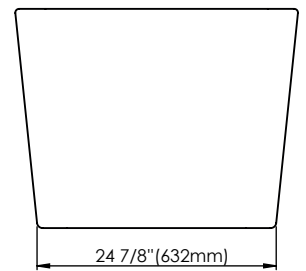
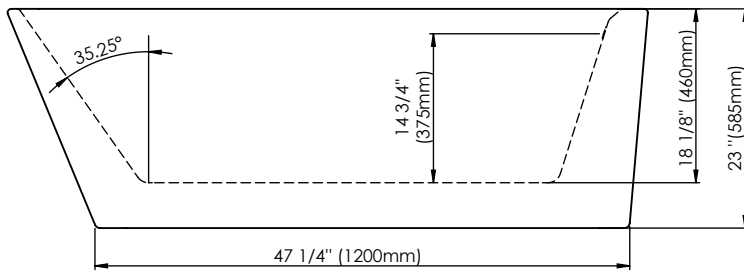
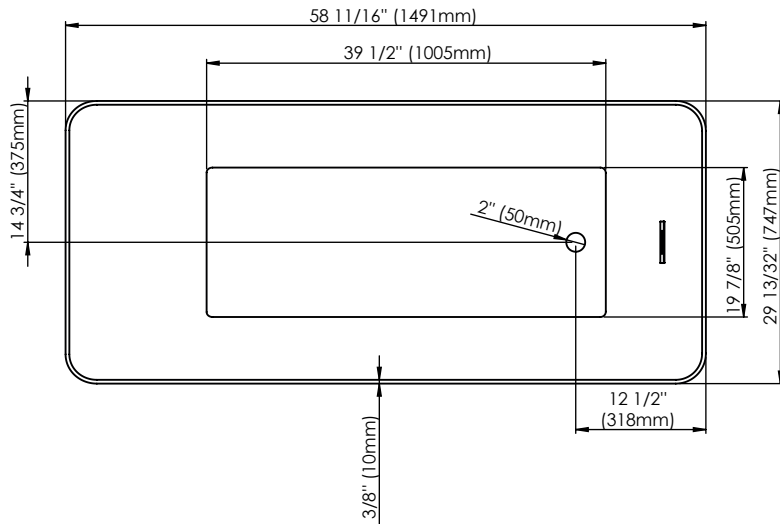
produitsneptune.com



Produits Neptune  
Rouge

# Lauzanne F1 3060

Bathtub



Ajustable feet

Above-the-floor rough (AFR)

\*All dimensions are approximate and subject to change without notice  
Please refer to the installation guide before beginning the installation